

# The Park on 16th Midrand



Factory  
Space



THE INDUSTRIAL  
PROPERTY SPECIALISTS



# The Park on 16th: is a pristine office park on the popular 16th Street, Midrand.



This office park offers easy access to the N1 highway and all major transport routes including buses and the Gautrain.

The office park is set in landscaped gardens and consists of six buildings that can be occupied by a single client.



PUBLIC TRANSPORT  
AVAILABLE



24/7 SECURITY



SHOPPING IN MIDRAND OR MALL  
OF AFRICA



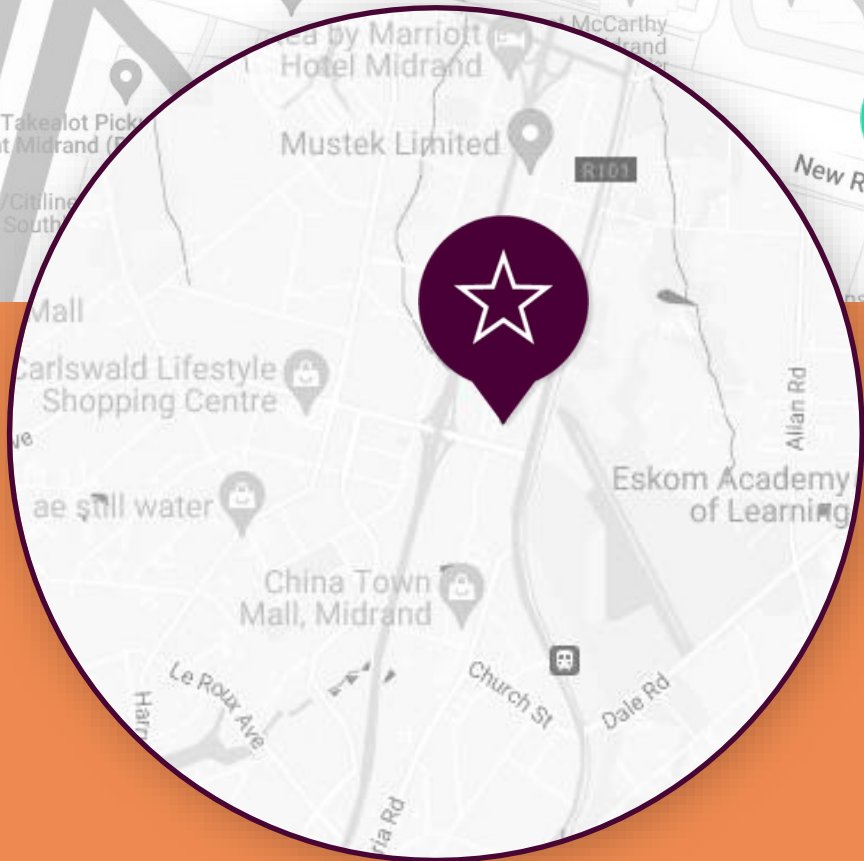
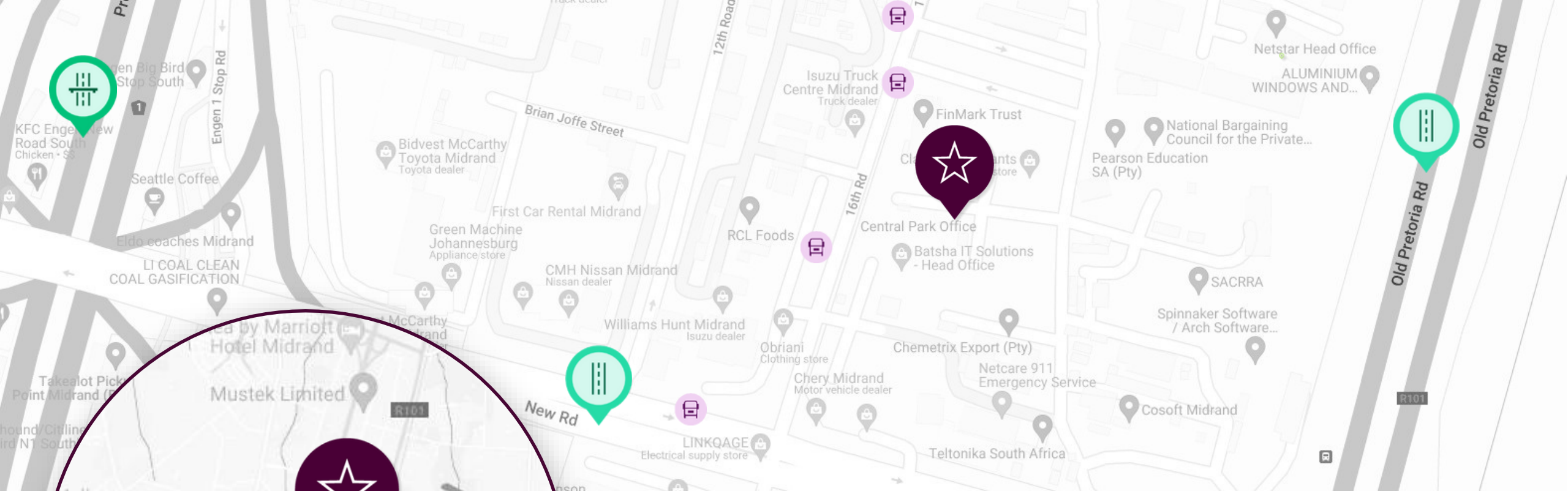
FIBRE



EASY HIGHWAY ACCESS



ON THE GAUTRAIN BUS  
ROUTE



## Location

The Park on 16th is centrally located in Midrand, for convenient access to the Johannesburg and Pretoria N1 highway.



Close to N1 Highway



Gautrain Bus Route



Mall of Africa close by



Public transport in the area



Close to Old Pretoria and New Road



# INTERIOR







**EXTERIOR**



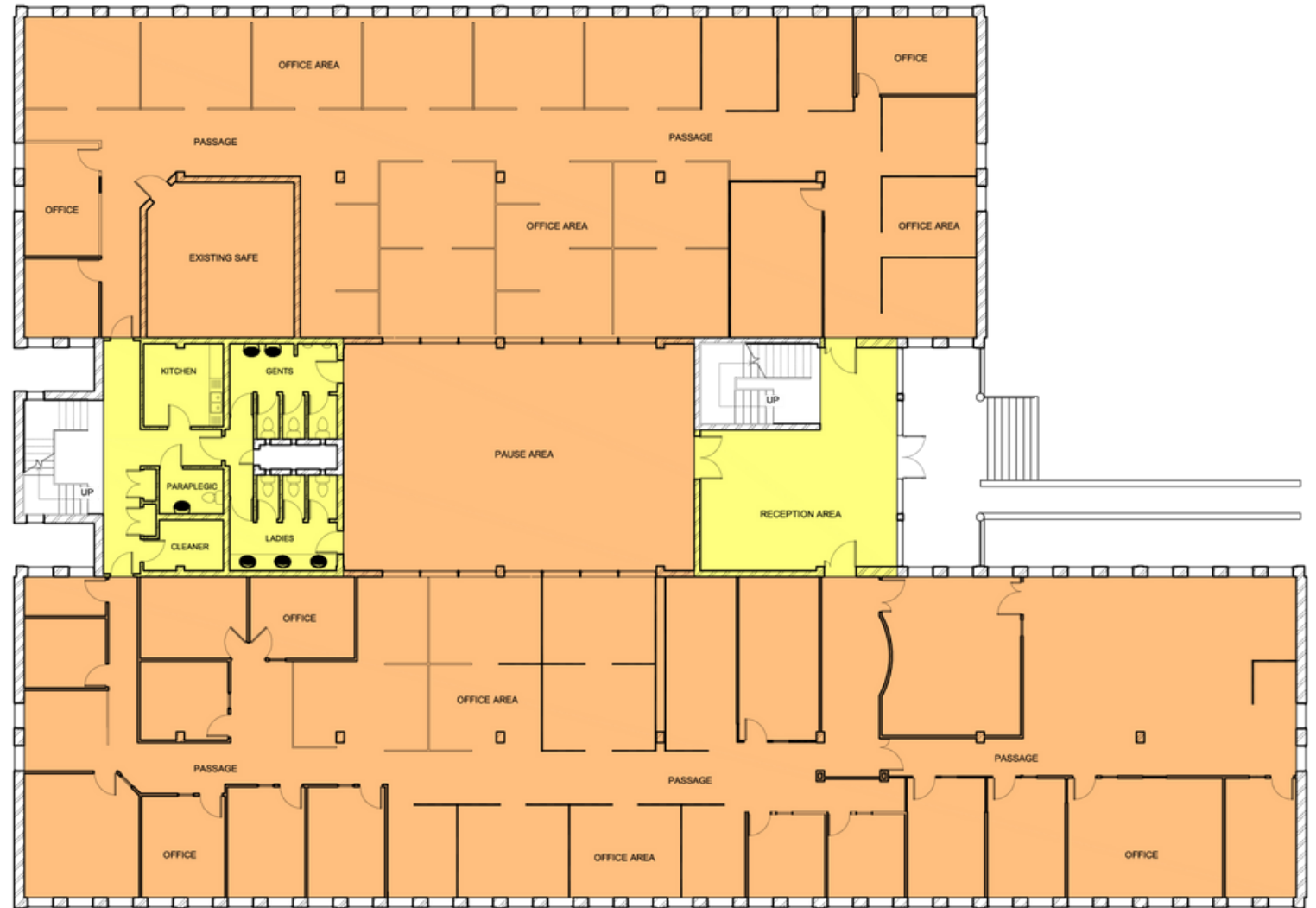
# Typical Floorplan

The Park on 16th  
16th Street, Midrand

Various pockets of space  
available, ranging from

410m<sup>2</sup> to 2 400m<sup>2</sup>

Rentals from R75/m<sup>2</sup>





# GROWTHPOINT PROPERTIES

Growthpoint Properties, the largest South African primary REIT listed on the JSE, is an international property company with assets in South Africa, Eastern Europe, Australia and the UK. Committed to creating space to thrive, we own and manage a diversified portfolio of over 500 property assets, locally and internationally.



JSE listed since  
**1987**

**FTSE4Good**  
Emerging Index since 2017

**Largest**  
South African  
Primary listed  
REIT

**500+**  
buildings

**178,8 BNB**  
Group property  
assets

**Best practice**  
corporate  
governance



FTSE/JSE  
**Top40**  
Company

**50%** Ownership of  
V&A  
Waterfront  
Cape Town

uninterrupted  
dividend  
**growth**  
to date



FTSE/JSE  
Responsible  
Index since  
**2009**

**Transparent**  
reporting

**Level 1 B-BBEE**

Contributor



**+ 8 million sqm**  
of space



**Quality portfolio**

diversified  
across sectors  
and geographies





Factory  
Space

THE INDUSTRIAL  
PROPERTY SPECIALISTS



Contact leasing broker

**Chris de Kock**

+27 78 463 0442

[chris@factoryspace.co.za](mailto:chris@factoryspace.co.za)

[factoryspace.co.za](http://factoryspace.co.za)



Head Office

Show numbers

Physical Address

GK12-Waterblom Extention Road

Portion 51 of the Farm Groote Fontein

Still Bay West

Still Bay

6674

Postal Address

P.O. Box 831

Stilbaai

6674